

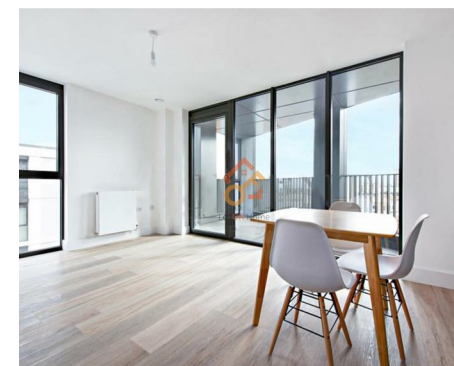
Let **UK** Home

2 Bedrooms

Flat

Located in London

£3,100 Per Month



info@letukhome.co.uk

<https://www.letukhome.co.uk/>

01795 358 886



10 Marshgate Lane London

E15 2EU



Let UK Home are excited to offer this spectacular two-bedroom apartment in the heart of Corn House, part of the Stratford Mill development, located in the bustling Marshgate Lane neighborhood, offering an ideal residential choice for urban dwellers seeking comfort and convenience.

This property comprises a large bright open plan kitchen and living room leading to a private balcony, three double bedrooms with wardrobes (master with en-suite), a large family sized bathroom and ample storage.

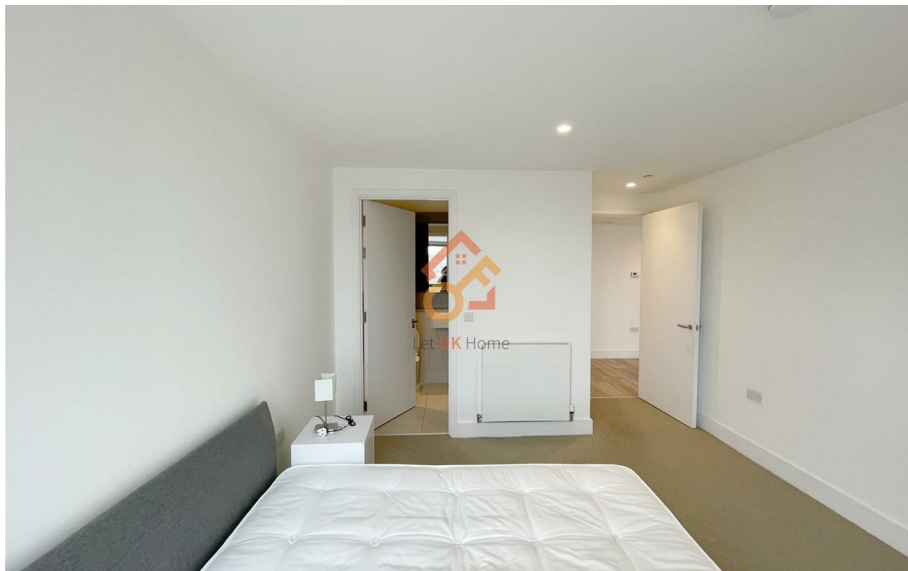
Situated in the accessible Marshgate Lane area, the apartment is within walking distance to Pudding Mill Lane DLR station, with direct DLR access to Canary Wharf, convenient for office workers and students. It is quickly accessible to University College London East Campus, Loughborough University London, London College of Fashion, Queen Mary University of London, and University of East London.

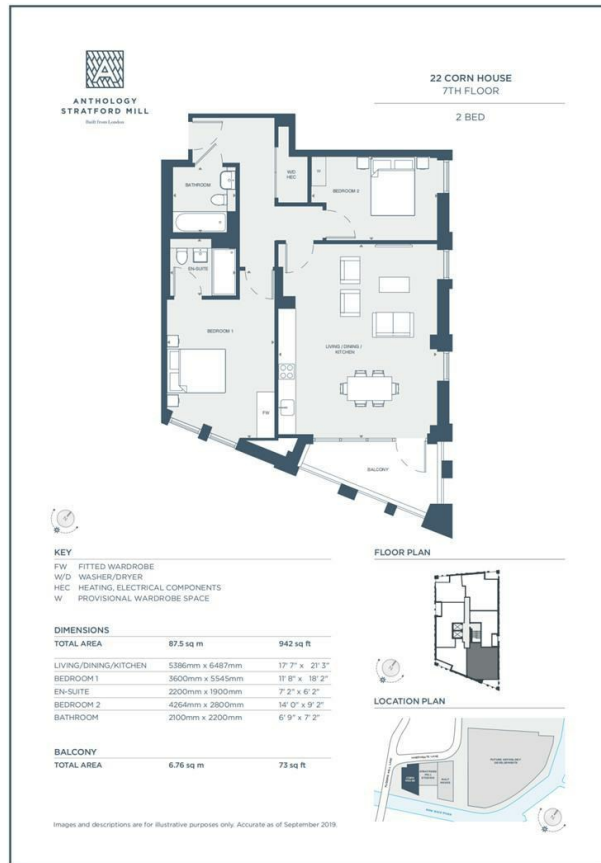
The apartment is surrounded by a plethora of amenities such as shopping malls, restaurants, and entertainment venues that enrich your daily life. The apartment is close to Olympic Park, London Aquatics Centre, Westfield Stratford City shopping center, and Stratford Cultural Quarter. It is within walking distance to the 2012 London Olympic venue - Queen Elizabeth Olympic Park, which is very suitable for daily physical exercise. Residents here can enjoy peaceful and comfortable living spaces while having easy access to nearby parks and green spaces to relish the beauty of nature. Corn House provides a safe, convenient, and comfortable home suitable for both single professionals and families.

10 Marshgate Lane London

£3,100 Per Month

- 7th Floor
- 24h Security
- Close to Local Shops
- Walking distance to Queen Elizabeth Olympic Park
- Concierge Service
- Private Balcony
- Close to Transport Links
- EPC Rating: B





Let **UK** Home

3F 2 Eastbourne Terrace
 Paddington
 London
 W2 6LG

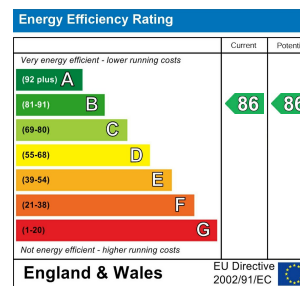
01795 358 886

info@letukhome.co.uk

Council Tax Band: E

Local Authority:

Agents Note: Whilst every care has been taken to prepare these particulars, they are for guidance purposes only. All measurements are approximate and are for general guidance purposes only and whilst every care has been taken to ensure their accuracy, they should not be relied upon and potential buyers/tenants are advised to recheck the measurements.



<https://www.letukhome.co.uk/>